

Minx™ 2

TetraSan®

Tame®

MITES CAN'T HIDE

Mites are a persistent problem affecting greenhouse and outdoor nursery production. Mites can appear any time of the year in greenhouses and under warm and dry situations outdoors. Because mites reproduce quickly and are present in various life stages, rotating solutions that affect the eggs, pupae and adult stages with differing IRAC modes of action are vital to a strong mite program.

MOUNT A GREAT DEFENSE

Follow this miticide rotation program to mount a great defense against damaging mites:

MITICIDE ROTATIONAL PROGRAM					
PRODUCT	IRAC	WEEK 1	WEEK 2	WEEK 3	WEEK 4
Minx™ 2 Insecticide	6		•		•
TetraSan® 5 WDG Miticide / Ovicide	10B	•		•	
Tame® 2.4 EC Spray Insecticide / Miticide	3		•		•

MINX™ 2 INSECTICIDE – NO WAITING FOR LATE-DAY

Minx™ 2 is the only water-based abamectin on the market. Minx 2 offers ease-of-mind with minimal PPE requirements and the flexibility to use during daylight hours, a critical benefit when an outbreak occurs. Other miticides that use EC formulations have heat-related limitations that reduce application timing options.

KEY USES: Controls ADULT mites on ornamental crops in greenhouses, shadehouses and fields

KEY PESTS: Mites, leafminers, whiteflies, thrips and aphids

TETRASAN® 5 WDG MITICIDE / OVICIDE – REACH MITES UNDER LEAVES

The excellent translaminar movement of etoxazole-formulated TetraSan® affects mites at all life stages. Its systemic action reaches mites on the underside of leaves, even when it is difficult to get good spray coverage.

KEY USES: Impacts ALL STAGES of mites on ornamental crops in greenhouses, shadehouses and fields, including indoor grown tomatoes

KEY PESTS: Lewis spider mites, southern red spider mites, spruce spider mites, two-spotted spider mites and others

TAME® 2.4 EC SPRAY INSECTICIDE / MITICIDE – GENTLE ON ORNAMENTALS

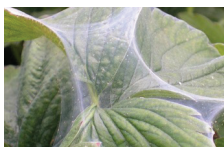
Tame® is a fenpropathrin-formulated adulticide that's tough on southern red mites and two-spotted spider mites and a broad spectrum of other common insect pests.

KEY USES: Controls ADULT mites on plants and ornamentals in lathhouses, greenhouses and outdoors

KEY PESTS: European and southern red mites, two-spotted mites, leafminers, whiteflies, thrips and aphids

See product labels for application guidelines and a complete list of pests controlled.

MITE IDENTIFICATION



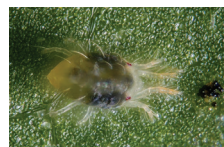
Typical spider mite webbing



Underleaf damage



Red spider mite



Two-spotted spider mite



Spruce mite



Nufarm Grow a better tomorrow.

www.nufarminsider.com

©2018 Nufarm. Important: Always read and follow label instructions. Tame® and TetraSan® are registered trademarks of Valent U.S.A. LLC. Minx™ is trademark of Cleary Chemical, LLC. 18-GHN-0002